

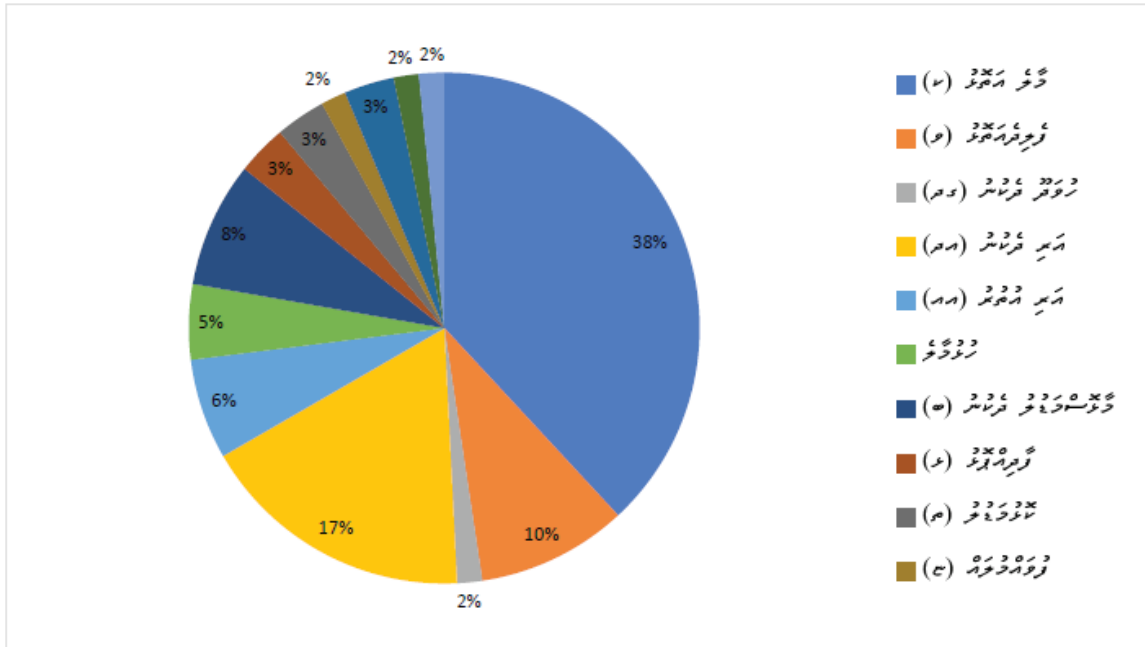
بِسْمِ اللّٰهِ الرَّحْمٰنِ الرَّحِیْمِ

١٩٤٠- ١٩٤١ - ١٩٤٢ - ١٩٤٣ - ١٩٤٤ - ١٩٤٥ - ١٩٤٦ - ١٩٤٧ - ١٩٤٨ - ١٩٤٩ - ١٩٥٠

١٩٥١ - ١٩٥٢ - ١٩٥٣ - ١٩٥٤ - ١٩٥٥ - ١٩٥٦ - ١٩٥٧ - ١٩٥٨ - ١٩٥٩ - ١٩٦٠

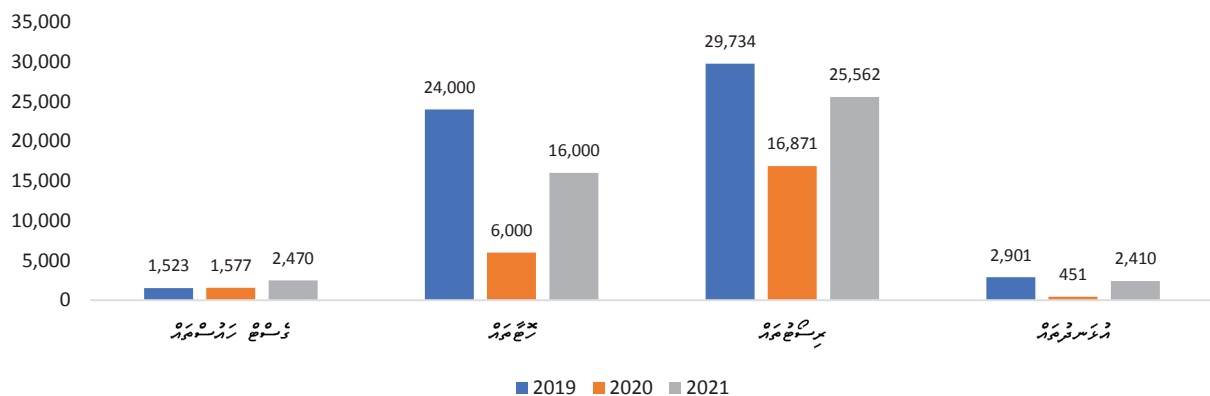
١٩٦١ - ١٩٦٢ - ١٩٦٣ - ١٩٦٤ - ١٩٦٥ - ١٩٦٦ - ١٩٦٧ - ١٩٦٨ - ١٩٦٩ - ١٩٧٠

شکل 7.1.1.2: سبب‌های اصلی مرگ‌ومیر در شیراز



در سال 1399، مرگ‌ومیر در شیراز 29,734 نفر بوده است که نسبت به سال 1398 (24,000 نفر) افزایش یافته است. در سال 1400، مرگ‌ومیر در شیراز 25,562 نفر بوده است که نسبت به سال 1399 (29,734 نفر) کاهش یافته است. در سال 1401، مرگ‌ومیر در شیراز 16,871 نفر بوده است که نسبت به سال 1400 (25,562 نفر) کاهش یافته است. در سال 1402، مرگ‌ومیر در شیراز 16,000 نفر بوده است که نسبت به سال 1401 (16,871 نفر) کاهش یافته است. در سال 1403، مرگ‌ومیر در شیراز 6,000 نفر بوده است که نسبت به سال 1402 (16,000 نفر) کاهش یافته است. در سال 1404، مرگ‌ومیر در شیراز 2,470 نفر بوده است که نسبت به سال 1403 (6,000 نفر) کاهش یافته است. در سال 1405، مرگ‌ومیر در شیراز 1,577 نفر بوده است که نسبت به سال 1404 (2,470 نفر) کاهش یافته است. در سال 1406، مرگ‌ومیر در شیراز 1,523 نفر بوده است که نسبت به سال 1405 (1,577 نفر) کاهش یافته است.

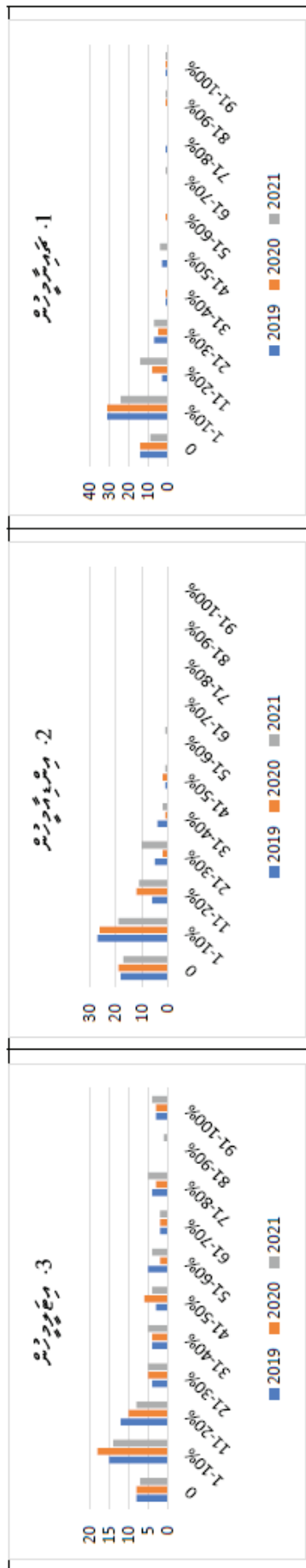
شکل 7.1.2.1: روند مرگ‌ومیر در شیراز

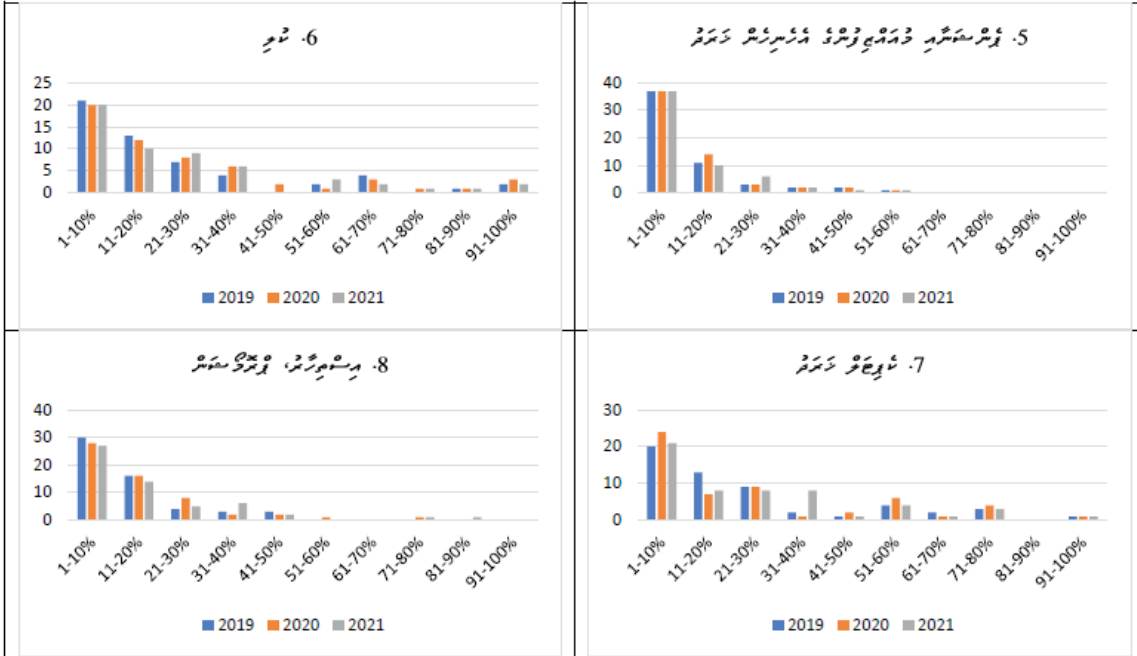


مؤشر 7.1.3.1: تعداد ابراهیمی‌نژادی قومی‌نژادها و قومی‌نژادها و قومی‌نژادها و قومی‌نژادها

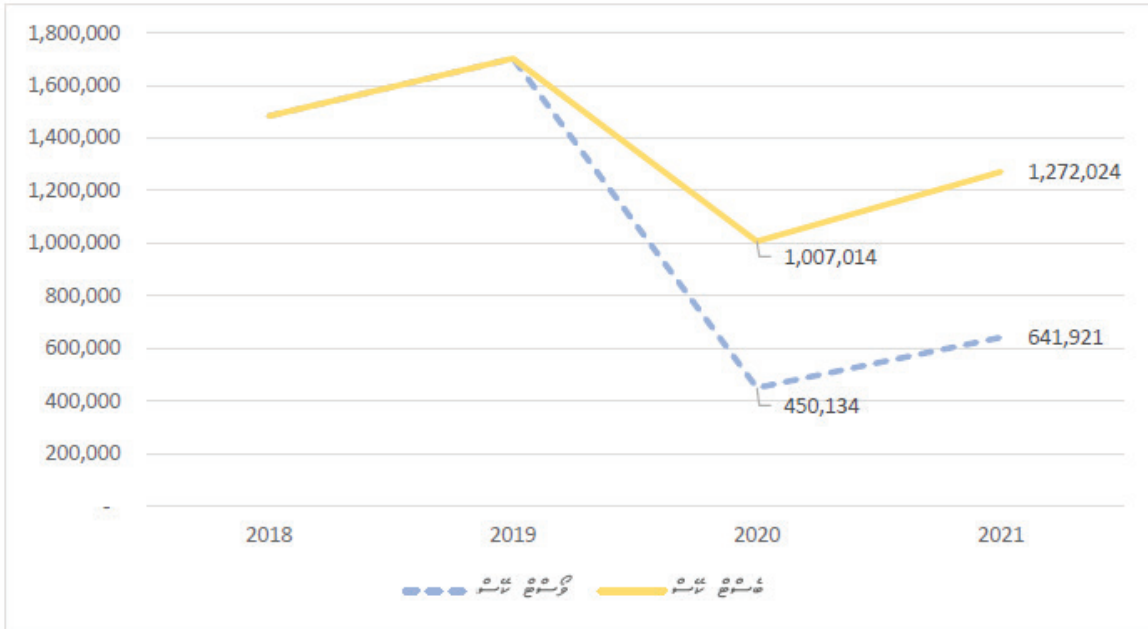
| سال | تعداد ابراهیمی‌نژادها | | | تعداد ابراهیمی‌نژادها | | | تعداد ابراهیمی‌نژادها | | | تعداد ابراهیمی‌نژادها | | | تعداد ابراهیمی‌نژادها | | | تعداد ابراهیمی‌نژادها | | | تعداد ابراهیمی‌نژادها | | | % |
|-----|-----------------------|------|------|-----------------------|------|------|-----------------------|------|------|-----------------------|------|------|-----------------------|------|------|-----------------------|------|------|-----------------------|------|------|---------|
| | 2019 | 2020 | 2021 | 2019 | 2020 | 2021 | 2019 | 2020 | 2021 | 2019 | 2020 | 2021 | 2019 | 2020 | 2021 | 2019 | 2020 | 2021 | 2019 | 2020 | 2021 | |
| 2 | 5 | 3 | 16 | 18 | 13 | 18 | 14 | 14 | 14 | 14 | 14 | 14 | 14 | 14 | 14 | 14 | 14 | 14 | 14 | 14 | 14 | 0 |
| 25 | 27 | 22 | 34 | 35 | 34 | 33 | 34 | 34 | 36 | 32 | 38 | 33 | 19 | 23 | 17 | 29 | 29 | 28 | 15 | 18 | 14 | 1-10% |
| 17 | 19 | 15 | 7 | 8 | 9 | 5 | 6 | 8 | 11 | 8 | 7 | 5 | 6 | 8 | 11 | 7 | 10 | 7 | 12 | 10 | 8 | 11-20% |
| 4 | 2 | 10 | 1 | 1 | 5 | 2 | 3 | 4 | 7 | 2 | 3 | 7 | 11 | 5 | 7 | 3 | 4 | 5 | 4 | 5 | 5 | 21-30% |
| 4 | 4 | 4 | | | | 1 | | | 1 | 1 | 1 | 5 | 2 | 2 | 3 | 3 | 2 | 7 | 4 | 4 | 5 | 31-40% |
| 2 | 4 | 5 | | | | 1 | | | | | 1 | 1 | 1 | 3 | 2 | | 1 | 1 | 3 | 6 | 4 | 41-50% |
| 3 | 1 | 1 | | | | | | | | 2 | | | | 2 | 1 | | 2 | 1 | 5 | 2 | 4 | 51-60% |
| 1 | 1 | 1 | | | | 1 | 1 | 1 | | | | | 2 | 2 | 2 | 3 | | 1 | 2 | 2 | 2 | 61-70% |
| | | | | | | 1 | 1 | 1 | | 1 | 1 | 1 | 3 | 4 | 5 | | | | 4 | 3 | 5 | 71-80% |
| 1 | 1 | 1 | | | | 1 | 1 | 1 | | 1 | 1 | 1 | 1 | 1 | 1 | | | | 1 | | 1 | 81-90% |
| | | | | | | | | | | | | | 1 | 1 | 2 | 1 | 1 | 1 | 3 | 3 | 4 | 91-100% |

تجزیه و تحلیل سناریوهای رشد و توسعه آموزش عالی در ایران (فصل 19-5)





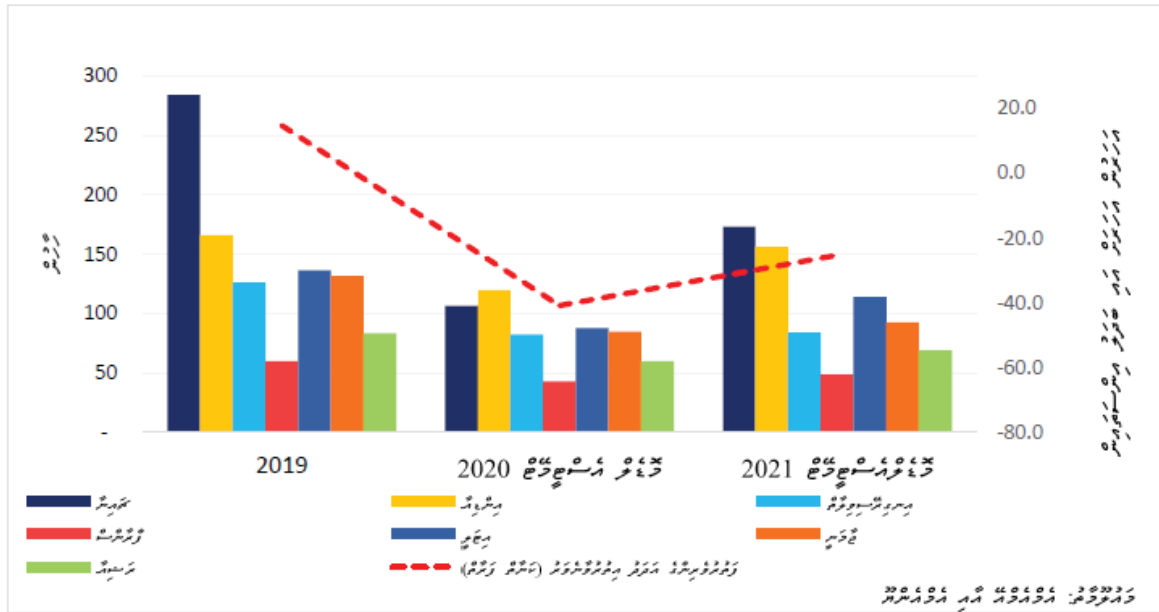
شکل 7.1.9.1: فزونیوں میں گریڈنگ اور جی ایم سی ایم کے درجوں



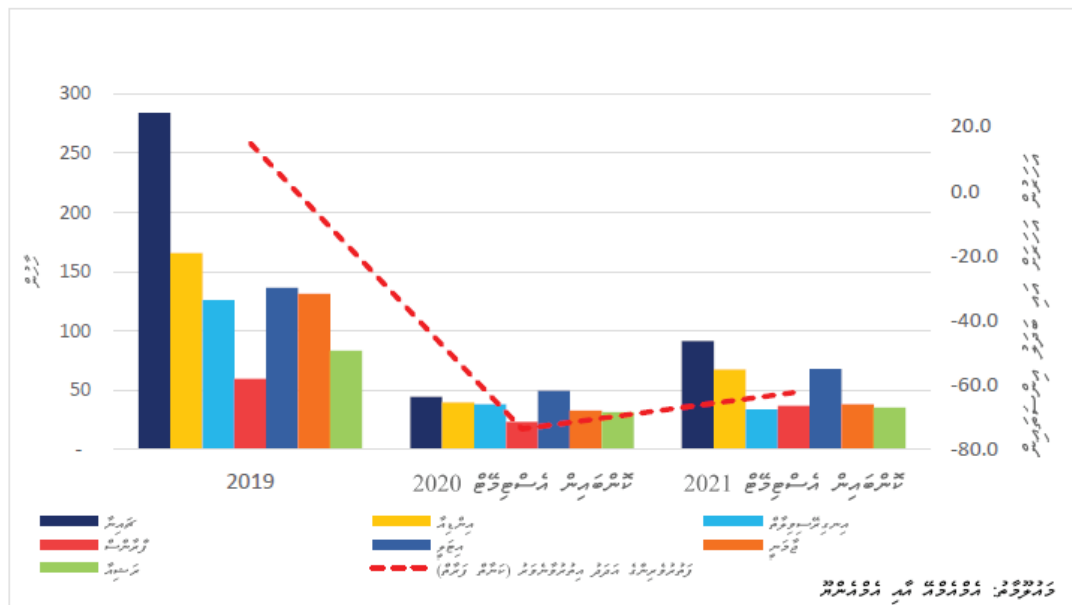
شکل 7.1.9.1: فزونیوں میں گریڈنگ اور جی ایم سی ایم کے درجوں اور گریڈنگ کے درجوں

| فزونیوں میں گریڈنگ اور جی ایم سی ایم کے درجوں اور گریڈنگ کے درجوں (جی ایم سی ایم کے درجوں) | | | | |
|--|-----------------------|---------------------|-----------------------|--------------------|
| گریڈنگ کے درجوں (%) | جی ایم سی ایم (مقررہ) | گریڈنگ کے درجوں (%) | جی ایم سی ایم (مقررہ) | |
| 14% | 173,347 | 14% | 173,347 | 2020 جی ایم سی ایم |
| -11% | 149,788 | -11% | 149,788 | 2020 فزونیوں |
| -63% | 59,627 | -63% | 59,627 | 2020 ڈیٹا |
| -100% | - | -100% | - | 2020 فزونیوں |
| -100% | - | -100% | - | 2020 ڈیٹا |
| -100% | - | -100% | - | 2020 فزونیوں |
| -92% | 10,595 | -26% | 98,169 | 2020 جی ایم سی ایم |
| -92% | 11,172 | -26% | 103,513 | 2020 فزونیوں |
| -92% | 9,430 | -26% | 87,378 | 2020 فزونیوں |
| -92% | 11,379 | -26% | 105,437 | 2020 فزونیوں |
| -92% | 11,058 | -26% | 102,461 | 2020 فزونیوں |
| -92% | 13,738 | -26% | 127,293 | 2020 فزونیوں |
| -74% | 450,134 | -41% | 1,007,014 | 2020 جی ایم سی ایم |
| 43% | 641,921 | 26% | 1,272,024 | 2021 جی ایم سی ایم |

گٹھ 7.1.9.2: 19-10-2019ء میں برصغیر کی فیکٹریوں کی پیداوار کی شرح (کے پی پی پی) - (کے پی پی پی کے طور پر)



گٹھ 7.1.9.3: 19-10-2019ء میں برصغیر کی فیکٹریوں کی پیداوار کی شرح (کے پی پی پی) - (کے پی پی پی کے طور پر)



تجزیہ و تحلیل برائے معاشی اہلیت (جی ڈی پی) کے ساتھ ساتھ (کی آر ڈی پی) کی ریسرچ

| | China | | | | India | | | | Germany | | | |
|------------|-----------|------------|------------|------------|-----------|------------|------------|------------|-----------|------------|------------|------------|
| | Best Case | Growth (%) | Worst Case | Growth (%) | Best Case | Growth (%) | Worst Case | Growth (%) | Best Case | Growth (%) | Worst Case | Growth (%) |
| Jan-20 | 31,744 | 23% | 31,744 | 23% | 13,845 | 19% | 13,845 | 19% | 9,859 | 0% | 9,859 | 0% |
| Feb-20 | 1,647 | -95% | 1,647 | -95% | 15,521 | 23% | 15,521 | 23% | 11,698 | 5% | 11,698 | 5% |
| Mar-20 | 498 | -97% | 498 | -97% | 5,496 | -54% | 5,496 | -54% | 6,671 | -59% | 6,671 | -59% |
| Apr-20 | - | -100% | - | -100% | - | -100% | - | -100% | - | -100% | - | -100% |
| May-20 | - | -100% | - | -100% | - | -100% | - | -100% | - | -100% | - | -100% |
| Jun-20 | - | -100% | - | -100% | - | -100% | - | -100% | - | -100% | - | -100% |
| Jul-20 | 16,446 | -50% | 814 | -98% | 11,173 | 1% | 166 | -99% | 7,503 | -9% | 165 | -98% |
| Aug-20 | 16,541 | -50% | 1,638 | -95% | 11,205 | 1% | 332 | -97% | 6,574 | -9% | 290 | -96% |
| Sep-20 | 12,502 | -50% | 1,857 | -93% | 11,406 | 1% | 507 | -96% | 8,153 | -9% | 539 | -94% |
| Oct-20 | 11,072 | -50% | 2,193 | -90% | 15,299 | 1% | 907 | -94% | 12,368 | -9% | 1,090 | -92% |
| Nov-20 | 7,877 | -50% | 1,950 | -88% | 14,610 | 1% | 1,082 | -93% | 11,633 | -9% | 1,282 | -90% |
| Dec-20 | 8,157 | -50% | 2,423 | -85% | 21,245 | 1% | 1,888 | -91% | 10,342 | -9% | 1,367 | -88% |
| Total 2020 | 106,484 | -63% | 44,764 | -84% | 119,799 | -28% | 39,744 | -76% | 84,800 | -36% | 32,961 | -75% |
| Total 2021 | 173,014 | 62% | 91,725 | 105% | 156,041 | 30% | 67,676 | 70% | 92,705 | 9% | 38,440 | 17% |

| | Italy | | | | UK | | | |
|------------|-----------|------------|------------|------------|-----------|------------|------------|------------|
| | Best Case | Growth (%) | Worst Case | Growth (%) | Best Case | Growth (%) | Worst Case | Growth (%) |
| Jan-20 | 20,766 | 24% | 20,766 | 24% | 10,734 | 5% | 10,734 | 5% |
| Feb-20 | 19,850 | 12% | 19,850 | 12% | 14,796 | 9% | 14,796 | 9% |
| Mar-20 | 3,992 | -78% | 3,992 | -78% | 7,259 | -41% | 7,259 | -41% |
| Apr-20 | - | -100% | - | -100% | - | -100% | - | -100% |
| May-20 | - | -100% | - | -100% | - | -100% | - | -100% |
| Jun-20 | - | -100% | - | -100% | - | -100% | - | -100% |
| Jul-20 | 3,800 | -29% | 107 | -98% | 6,804 | -20% | 212 | -98% |
| Aug-20 | 8,153 | -29% | 458 | -96% | 7,894 | -20% | 491 | -95% |
| Sep-20 | 3,712 | -29% | 313 | -94% | 6,327 | -20% | 591 | -93% |
| Oct-20 | 4,671 | -29% | 525 | -92% | 9,094 | -20% | 1,132 | -90% |
| Nov-20 | 7,914 | -29% | 1,111 | -90% | 9,588 | -20% | 1,492 | -88% |
| Dec-20 | 15,163 | -29% | 2,555 | -88% | 9,621 | -20% | 1,797 | -85% |
| Total 2020 | 88,022 | -35% | 49,677 | -64% | 82,118 | -35% | 38,503 | -69% |
| Total 2021 | 113,803 | 29% | 67,959 | 37% | 84,008 | 2% | 33,714 | -12% |

| | France | | | | Russia | | | |
|------------|-----------|------------|------------|------------|-----------|------------|------------|------------|
| | Best Case | Growth (%) | Worst Case | Growth (%) | Best Case | Growth (%) | Worst Case | Growth (%) |
| Jan-20 | 6,955 | -3% | 6,955 | -3% | 12,531 | 30% | 12,531 | 30% |
| Feb-20 | 10,787 | 1% | 10,787 | 1% | 9,690 | 32% | 9,690 | 32% |
| Mar-20 | 4,042 | -54% | 4,042 | -54% | 6,728 | -28% | 6,728 | -28% |
| Apr-20 | - | -100% | - | -100% | - | -100% | - | -100% |
| May-20 | - | -100% | - | -100% | - | -100% | - | -100% |
| Jun-20 | - | -100% | - | -100% | - | -100% | - | -100% |
| Jul-20 | 2,110 | -6% | 45 | -98% | 4,077 | -24% | 94 | -98% |
| Aug-20 | 2,987 | -6% | 127 | -96% | 3,947 | -24% | 181 | -97% |
| Sep-20 | 1,811 | -6% | 115 | -94% | 3,689 | -24% | 254 | -95% |
| Oct-20 | 3,709 | -6% | 315 | -92% | 5,991 | -24% | 550 | -93% |
| Nov-20 | 3,981 | -6% | 423 | -90% | 6,232 | -24% | 715 | -91% |
| Dec-20 | 6,445 | -6% | 822 | -88% | 6,893 | -24% | 949 | -90% |
| Total 2020 | 42,827 | -28% | 23,631 | -60% | 59,778 | -28% | 31,691 | -62% |
| Total 2021 | 48,780 | 14% | 37,157 | 57% | 69,120 | 16% | 35,490 | 12% |

| | Total Tourist Arrivals | | | | Total Bednights | | | |
|----------------------------------|------------------------|------------|------------|------------|-----------------|------------|------------|------------|
| | Best Case | Growth (%) | Worst Case | Growth (%) | Best Case | Growth (%) | Worst Case | Growth (%) |
| Jan-20 | 173,347 | 14% | 173,347 | 14% | 1,151,709 | 15% | 1,151,709 | 15% |
| Feb-20 | 149,788 | -11% | 149,788 | -11% | 989,834 | -3% | 989,834 | -3% |
| Mar-20 | 59,627 | -63% | 59,627 | -63% | 562,539 | -44% | 562,539 | -44% |
| Apr-20 | - | -100% | - | -100% | 7,772 | -99% | 7,772 | -99% |
| May-20 | - | -100% | - | -100% | - | -100% | - | -100% |
| Jun-20 | - | -100% | - | -100% | - | -100% | - | -100% |
| Jul-20 | 98,169 | -26% | 10,595 | -92% | 623,712 | -20% | 69,453 | -91% |
| Aug-20 | 103,513 | -26% | 11,172 | -92% | 731,264 | -20% | 81,429 | -91% |
| Sep-20 | 87,378 | -26% | 9,430 | -92% | 569,214 | -20% | 63,385 | -91% |
| Oct-20 | 105,437 | -26% | 11,379 | -92% | 735,896 | -20% | 81,945 | -91% |
| Nov-20 | 102,461 | -26% | 11,058 | -92% | 712,316 | -20% | 79,319 | -91% |
| Dec-20 | 127,293 | -26% | 13,738 | -92% | 843,464 | -20% | 93,923 | -91% |
| Total 2020 | 1,007,014 | -41% | 450,134 | -74% | 6,927,720 | -35% | 3,181,309 | -70% |
| Total 2021 | 1,272,024 | 26% | 641,921 | 43% | 8,552,749 | 23% | 4,369,323 | 37% |
| Percent of 2019 achieved in 2021 | 75% | - | 38% | - | 80% | - | 41% | - |

مركز ابحاث وخدمات، جده، كندا (2017). *التأثير الاقتصادي لوباء كورونا على السياحة العالمية*.
Retrieved from .182 - 169، 4، <https://doi-org.tosee/10.20867>

مركز ولاء. (2020). *هل نرى مستقبل السفر قريباً؟* [Retrieved from https://jingtravel.com/the-near-future-of-](https://jingtravel.com/the-near-future-of-chinese-group-and-fit-travel)

www.bbc.com/news/world-europe (2020). *التأثير الاقتصادي لوباء كورونا على السياحة العالمية*.
52687448-Retrieved from <https://www.bbc.com/news/world-europe>

www.ijerph.com (2017). *التأثير الاقتصادي لوباء كورونا على السياحة العالمية*.
2017-1314822-1331677X/10-1080 :Retrieved from DOI .950 - 939، 30:1

www.ijerph.com (2020). *التأثير الاقتصادي لوباء كورونا على السياحة العالمية*.
Retrieved from <https://archives.tpsindia.org/index.php/> .365 - 362، 40:35
7233/7523/sipn/article/view

www.ijerph.com (2020). *التأثير الاقتصادي لوباء كورونا على السياحة العالمية*.
Retrieved from <https://ejtr.vumk.edu>

www.economist.com/europe (2020). *التأثير الاقتصادي لوباء كورونا على السياحة العالمية*.
Retrieved from <https://www.economist.com/europe> .19-covid/11/04/2020/Retrieved from
even-harder-than-the-rest-of-the-euro-zone

www.worldview-stratfor-com/article/europes-tourism- (2020). *التأثير الاقتصادي لوباء كورونا على السياحة العالمية*.
Retrieved from <https://worldview-stratfor-com/article/europes-tourism-> 19،
corona-19-industry-confronts-unwelcome-visitor-covid

www.worldometers-info/coronavirus/country/italy (2020). *التأثير الاقتصادي لوباء كورونا على السياحة العالمية*.
Retrieved from <https://www.worldometers-info/coronavirus/country/italy>

www.who-int/emergencies/diseases/novel- (2020). *التأثير الاقتصادي لوباء كورونا على السياحة العالمية*.
Retrieved from <https://www.who-int/emergencies/diseases/novel-> gclid=EA1aIQobChMI9cSYpZyi6QIVgTgrCh0NMgA5EAAYASAAEgKfVfD_?2019-coronavirus
BwE

www.worldbank-org/en/ (2020). *التأثير الاقتصادي لوباء كورونا على السياحة العالمية*.
Retrieved from <https://www.worldbank-org/en/> .
publication/global-economic-prospects

Retrieved from www.e-unwto.org/toc/wtobarometereng (2020). *World Tourism Barometer*.
2/18/https://www.e-unwto.org/toc/wtobarometereng

Retrieved from <https://www.businessfinland.fi> (2020). *Business Finland*.
49868b/globalassets/julkaisut/Retrieved from https://www.businessfinland.fi
outlook-on-tourism-industry-in-euro---19-covid/2020/visit-finland/tutkimukset

Retrieved from https://www.tourism.gov.mv/downloads/Visitor_Survey/Maldives-Visitors-Survey-pdf-2019-August-20%from (2019). *Maldives Tourism Authority*.
2019, August. Retrieved from https://www.tourism.gov.mv/downloads/Visitor_Survey/Maldives-Visitors-Survey-pdf-2019-August-20%from

Retrieved from <http://www.amcham-egypt.org/bic/pdf/corona1> (2020). *AmCham Egypt*.
19-20COVID%-20%McKinsey_Co
20B%20For%Implications-19-20COVID%-20%McKinsey_Co

Retrieved from <https://www.aljazeera.com/news/html-200530231135596-live-updates-50000> (2020). *Al Jazeera*.
-latin-america-coronavirus-deaths-top/05/2020/Retrieved from https://www.aljazeera.com/news/html-200530231135596-live-updates-50000

Retrieved from <https://www.forbes.com/sites/forbespr/richest-on--50-thailands/02/04/2020/> (2020). *Forbes*.
1e18b60e149b#/forbes-list-suffer-decline-in-wealth-amid-coronavirus-woes

Retrieved from <https://www.who.int/news-room/fact-sheets/detail/coronavirus-2019-ncov> (2020). *World Health Organization*.
19-20COVID%-20%McKinsey_Co

Retrieved from <https://www.who.int/news-room/fact-sheets/detail/coronavirus-2019-ncov> (2017). *World Health Organization*.
60 - 50 , 2 , (3)

Retrieved from <https://jamanetwork.com/journals/jama/fullarticle> (2020). *JAMA Network*.
2763667/journals/jama/fullarticle

Retrieved from <https://www.who.int/news-room/fact-sheets/detail/coronavirus-2019-ncov> (2011). *World Health Organization*.
76-61 , (1) 21

Retrieved from <https://www.who.int/news-room/fact-sheets/detail/coronavirus-2019-ncov> (2020). *World Health Organization*.
2020

Retrieved from <https://www.who.int/news-room/fact-sheets/detail/coronavirus-2019-ncov> (2008). *World Health Organization*.
2008

2008-06-003-annals
j-/10-1016/Retrieved from <https://doi-org> .832-809 ، (3) 35

2020) . (2020) .
when--19-Retrieved from <https://www.traveltrademaldives.com/air-travel-post-covid> .
/can-maldives-aviation-industry-bounce-back

Retrieved .2023 -
/2023-from <https://www.traveltrademaldives.com/ttm-report-maldives-tourism-industry-forecast>

Retrieved from <https://www-e-unwto> .
9789284419876/10-18111/org/doi/pdf

Retrieved from <https://www-unwto-org/news/international-tourism-arrivals-could-> .
2020-fall-in

international-tourist-numbers--19-Retrieved from <https://www-unwto-org/news/covid> .
2020-in-80-60-could-fall

Retrieved from <https://www-unwto> .
19-org/international-tourism-and-covid

Retrieved from <https://www-unwto-org/> .(2020)
19-tourism-covid

Retrieved from <https://doi> .238-223 ، (2) 24
02692170903426054/10-1080/org

Retrieved from <https://pata-org/store/publications/survey-report-on-> .
chinese-tourists-travel-intent-after-the-end-of

/19/03/2020/Retrieved from <https://www-forbes-com/sites/jamesasquith> .
a-positive-coronavirus-update-life-in-chin

2007-04-009-j-tourman/10-1016/Retrieved from <https://doi-org> .31-19 ، (1) 29

